

2017 SUBSCRIPTION RATES

Institution	For subscription information visit the-aps.org/publications/subs	
Individual	Online Only	\$400
Member	Online Only	FREE

ORDER INFORMATION

Order form and more information can be found at www.physiology.org

Frequency:

Published online as articles are ready and archived as monthly issues. Printed monthly in the consolidated version of AJP.

Two volumes per year.
eISSN: 1522-1563

CONTACT

Customer Service:

American Physiological Society
9650 Rockville Pike
Bethesda, MD 20814-3991 (USA)
Web: www.the-aps.org
Email: subscriptions@the-aps.org
Tel: 301.634.7180, Fax: 301.634.7418

In Latin America, contact:

ITMSGGroup
Tel: 305.823.7766
Email: contact@itmsgroup.net

In China, contact:

Charlesworth China
Tel: +86 10 87521278
Email: sales@charlesworth.com.cn

In India, contact:

Dilip Kumar Jha
Tel: +91 9891096706
Email: dkumar@pcgplus.com

In Europe and MENA, contact:

Europe: Tel: +31 88 4100 400
Email: APS@accucoms.com

MENA: Tel: +962 77 5111 511
Email: APS@accucoms.com

Submit your manuscript today! <http://ajplung.msubmit.net>

"Thanks for being so fast on this. I am going to send more manuscripts to AJP!"

—Marc Hershenson, MD

"Thanks for the amazing efficiency, quality reviews and quick turnaround time – it is a real pleasure!!!"

—Naftali Kaminski, MD

APSselect

Monthly collection of the "best of the best" original research articles from the APS journals
apsselect.physiology.org

Additional Submission Benefits Include:

- ✓ No page or figure limits
- ✓ Publication by the prestigious American Physiological Society
- ✓ Website offers a simplified, clean look, allowing for easy navigation
- ✓ World-class editorial oversight with easy online submission and rapid review
- ✓ Delivery to PubMed Central of NIH-funded articles by APS on behalf of authors
- ✓ Increased visibility via Editorial Focus articles that highlight published articles
- ✓ All articles made freely available 12 months post-publication
- ✓ Broad readership via global access, personalized alerts, cross referencing, and search engine optimization



American Physiological Society
9650 Rockville Pike
Bethesda, MD 20814

Call: 301-634-7180 • Fax: 301-634-7418

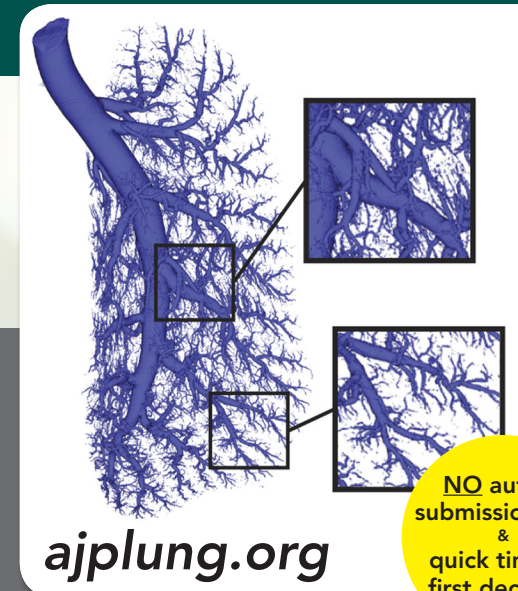
Web: www.physiology.org

Email: subscriptions@the-aps.org

©The APS logo and AJP-Lung Cellular and Molecular Physiology are trademarks of the American Physiological Society.



American Journal of Physiology LUNG CELLULAR AND MOLECULAR PHYSIOLOGY®



ajplung.org

**NO author
submission fees
&
quick time to
first decision!**

NEW WEBSITE COMING SOON

AJPLung

AJPLung

ajplung.blogspot.com



A journal of the
American
Physiological
Society

Editorship

Editor-in-Chief: Sadis Matalon, PhD, DrSc (Hon.)



Sadis Matalon received a Ph.D. in Physiology from the University of Minnesota. He currently serves as the Vice Chair for Research of the Department of Anesthesiology and as Director of the School of Medicine Pulmonary Injury and Repair Center at the University of Alabama.

Journal Home Page: ajplung.physiology.org

Editor's Email: jsmatalon@uabmc.edu

Deputy Editor

Y. S. Prakash, The Mayo Clinic

Associate Editors

James Collawn, University of Alabama at Birmingham

Mark Gillespie, University of South Alabama

Lester Kobzik, Harvard School of Public Health

Wolfgang Kuebler, St. Michael's Hospital

Dolly Mehta, University of Illinois at Chicago

Bethany Moore, University of Michigan

Irina Petrache, National Jewish Health

Larissa Akimi Shimoda, Johns Hopkins School of Medicine

Scope of the Journal

The American Journal of Physiology-Lung Cellular and Molecular Physiology publishes original research covering the broad scope of molecular, cellular, and integrative aspects of normal and abnormal function of cells and components of the respiratory system. Areas of interest include conducting airways, pulmonary circulation, lung endothelial and epithelial cells, the pleura, neuroendocrine and immunologic cells in the lung, neural cells involved in control of breathing, and cells of the diaphragm and thoracic muscles. The processes to be covered in the Journal include gas exchange, metabolic control at the cellular level, intracellular signaling, gene expression, genomics, macromolecules and their turnover, cell-cell and cell-matrix interactions, cell motility, secretory mechanisms, membrane function, surfactant, matrix components, mucus and lining materials, lung defenses, macrophage function, transport of salt, water and protein, development and differentiation of the respiratory system, and response to the environment. Reports of research using innovative approaches in cell and organ physiology, molecular and cellular biology, molecular genetics, genomics including animal models of integrative function, biochemistry, biophysics, and morphology are welcome. The Journal also encourages submission of original manuscripts in the field of translational physiology, an area of research that bridges the gap between basic lung, cellular, and molecular physiology and patient care. Manuscripts in this area may transfer clinical insights into hypotheses that can be tested and validated in the basic research laboratory, or they may transfer knowledge gained from basic research to human pathophysiology and to improved methods of treating or preventing disease.

Special Calls for Papers

Electronic Cigarettes: Not All Good News?

Submission Deadline: December 31, 2017

Age-Related Dysfunction in Lung Barrier Function in Health and Disease

Submission Deadline: December 31, 2017

Biomarkers in Lung Diseases: From Pathogenesis to Prediction to New Therapies

Submission Deadline: December 31, 2017

Ion Channels in Lung Function and Disease

Submission Deadline: December 31, 2017

Translational Research in Acute Lung Injury and Pulmonary Fibrosis

Submission Deadline: December 31, 2017

For more information, please visit <http://bitly.com/AJPLungCalls>. All manuscripts should be submitted online via eJournal Press at ajplung.msubmit.net.

Important Information for READERS, AUTHORS, and LIBRARIANS

- **AuthorChoice:** Authors can choose to pay a fee to have their articles publicly available upon publication. Cost of Publication: the-aps.org/PublicationCost
AuthorChoice: the-aps.org/AuthorChoice
- CiteTrack: Email alerts are sent when new content matches criteria based on the topics, authors, and articles you want to track.
- CrossRef: APS participates in CrossRef initiative, which links to over 5,600 journals worldwide.
- eTOCs: Free email notification is sent of new tables of contents as they become available.
- Google search engine: All online content is searchable through the Google search engine.
- Index Medicus, BIOSIS Previews, and TRSI Web of Science index APS journals. APS journal content is indexed on MEDLINE and is accessible through PubMed.
- Legacy Content is an online package of over 100 years of historical scientific research from 13 APS research journals.
- LOCKSS and CLOCKSS: Perpetual electronic archiving in LOCKSS and CLOCKSS preserves the content of all APS journals.
- Manuscripts are published online within days of acceptance.
- RSS Feeds: is a mechanism to subscribe to "headlines" from a website.

Article Types

RESEARCH ARTICLES: Important new research results including the entire contents of a research project. Research articles include an abstract, an introduction, methods and results sections, a discussion, and relevant citations. Large data sets are welcome for inclusion in the online publication. Articles are peer reviewed.

RAPID REPORTS: Compelling, innovative, and novel communications of new findings that could potentially have a major impact on the field.

PERSPECTIVES: Short articles that disseminate new and original lines of thinking in physiology.

INNOVATIVE METHODOLOGY: Manuscripts submitted under this category should describe new methods for the recording, collection, and/or analysis of data relevant to understanding how the physiological system works.

REVIEW ARTICLES: Synthesis of state-of-the-art knowledge in a defined area highlighting new questions and pointing to future

research directions. They encompass examination of biological processes, systems, and models, and technologies for their study. Typically, reviews are invited and all are peer reviewed.

EDITORIALS: Provide commentary by the Editor, Associate Editors, and other scientists and experts on issues related to the Journal's mission as well as of general interest to our readers. Acceptance will reside with the editors.

EDITORIAL FOCUS: Commentaries on papers of unusual interest published in the journal that were chosen by the Editor to be highlighted by a brief Editorial Focus commentary.

LETTERS TO THE EDITOR: Should be short (~500 words) and may respond to previously published articles or address matters of general interest to the readership. Should not include original, unpublished data. Authors of the original article will be provided an opportunity for rebuttal.

Featured Articles and Collections

Editor's Selected Articles

View these featured articles for FREE at ajplung.org. Editor's selected articles (which periodically change) are free for a limited time so be sure to check out the website regularly.

Check out FREE Editor's Selected Articles at ajplung.org